

The Schröder Pole and Bracket Guide is designed as an accessory to the Schröder luminaire catalogue, in order to give the user more detailed information regarding the poles and brackets we offer you.

This Guide provides detailed information about the manufacturing process, available dimensions and options, EPA data, as well as detailed drawings for each pole and bracket.

HOW TO CREATE AN ORDER NUMBER

The order number comprises 2 to 3 lines: one for the luminaire, one for the pole, and, if applicable, a third one for the bracket.

A. THE ORDER NUMBER FOR THE LUMINAIRE

The order number for a luminaire is chosen with the Schröder catalogue. It consists of:

1. The identification code of the luminaire, f.ex. **ALU** for the ALURA luminaire.
2. The lamp with the lamp type, f.ex. **150MH-T6**.
3. The optic f.ex. **DSYM** for direct symmetrical lighting.
4. The voltage, f.ex. **120** for 120 Volt.
5. The color of the finish, f.ex. **RAL 9007** for textured gray.

→ The order number for this luminaire will be **ALU-150MH-T6-DSYM-120-RAL9007**

B. THE ORDER NUMBER FOR THE POLE

The order number for a pole consists of:

1. The pole identification code, f.ex. **APR** (Aluminum Pole Round).
2. The pole section in inches, f.ex. a section of **4"** (102 mm).
3. The wall thickness code, f.ex. **F** for 0.125" (3.2 mm)
4. The pole height in feet, f.ex. **8** for 8 ft (2.44 m)
5. If required, add one or more options, f.ex. **PH7** for a button-type photoelectric cell.
6. The color of the finish (usually the same color as the luminaire), f.ex. **RAL 9007** for textured gray.

→ The order number for this pole will be **APR4F-8-PH7-RAL9007**

C. THE ORDER NUMBER FOR THE BRACKET

If you require a bracket for your luminaire, this is how the bracket number is created:

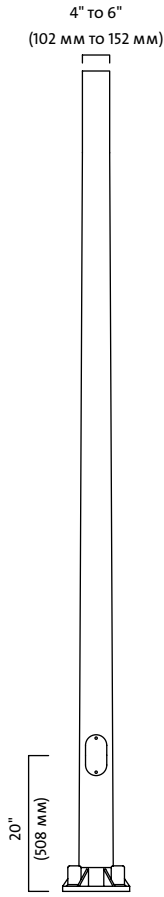
1. The identification code of the bracket, f.ex. **CAL** for the Casura bracket.
2. The bracket length in feet, f.ex. **2** for 2 ft. (0.61 m)
3. The configuration of the bracket, f.ex. **1A** for a single bracket. Here is a table with the possible configurations:

Code	Configuration
1A	Single bracket
2	Double bracket
W	Wall bracket

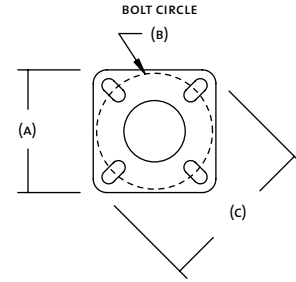
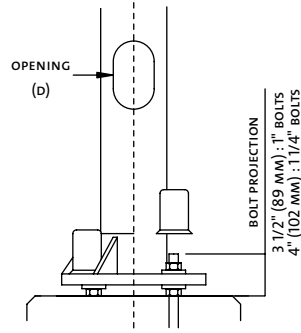
4. The color of the finish (usually the same color as the luminaire), f.ex. **RAL 9007** for textured gray.

→ The order number for this bracket will be **CAL-2-1A-RAL9007**

ATR64 / ATR74 / ATR85 / ATR106 ROUND ALUMINUM TAPERED POLE



BASE DETAILS:



COMES WITH 4 ANCHOR BOLTS, 8 NUTS AND WASHERS.
VARIOUS DECORATIVE BASE COVERS AVAILABLE.

Specifications :

Pole: Single-piece shaft, tapering using a cold-working process from seamless extruded aluminum (6063 wrought alloy) tubing. Free of longitudinal welds, its diameter and wall thickness are sufficient to withstand specified design loads. After tapering and welding, the entire shaft assembly is heat treated to T6 temper.

A maintenance opening, complete with cover and ground lug, is centered 20" (508 mm) from the bottom of the anchor plate.

Nut Cover: Made of spun aluminum, press fit over the nuts of the bolts.

Finish: "Hot Dip" chemical etching preparation. Polyester powder coat textured finish. Available in a range of many RAL colors. Durable UV-resistant exterior finish as per # ASTM G7 and outstanding salt-spray resistance according to # ASTM B117 testing procedures.

Options:

- PH7:** Button-type photoelectric cell (specify operating voltage)
- PH8:** Quarter-turn type photoelectric cell (specify operating voltage)
- PH9:** Shorting cap for single phase only
- DR:** Duplex receptacle (120V line volt only)
- GFI:** DR with common ground fault interrupter (120V line voltage only)
- BA:** Banner arm option
- BAS24:** Single banner arm
- BASD24:** Single banner arm with upper and lower arm
- BAD24:** Double banner arm
- BADD24:** Double banner arm with upper and lower arm
- PSS16:** Single plant support
- PSD16:** Double plant support

Note: EPA recommendations are calculated according to AASHTO standards and include a 30% gust factor, with a 50-lbs (23 kg) load applied at 1 ft. (305 mm) above the top of the pole. The maximum EPA rating shown is 30.0 sq. ft. Some poles may exceed this rating.

CATALOG NUMBER	POLE HEIGHT		WALL THICKNESS		WEIGHT		EPA RATING	EPA RATING	EPA RATING	EPA RATING	POLE SIZE		(A) PLATE SIZE		(B) BOLT CIRCLE		ANCHOR BOLTS		(C)		(D) OPENING			
	ft	m	in	mm	lbs	kg	sq.ft	sq.ft	sq.ft	sq.ft	in	mm	in	mm	in*	mm*	in	mm	in	mm	in	mm		
ATR64N	18	5.5	0.188	4.8	70	32	12.1	8.9	7.2	5.4	6	152	4	102	10.24	260	9.5 (9-10)	241 (229-254)	3/4-18	19-457	12.68	322	3-5	76-127
ATR64V	18	5.5	0.250	6.4	87	40	16.0	11.9	9.8	7.4	6	152	4	102	10.24	260	9.5 (9-10)	241 (229-254)	3/4-18	19-457	12.68	322	3-5	76-127
ATR64B	19	5.8	0.156	4.0	62	28	8.6	6.2	5.0	3.7	6	152	4	102	10.24	260	9.5 (9-10)	241 (229-254)	3/4-18	19-457	12.68	322	3-5	76-127
ATR64N	19	5.8	0.188	4.8	72	33	10.6	7.7	6.2	4.6	6	152	4	102	10.24	260	9.5 (9-10)	241 (229-254)	3/4-18	19-457	12.68	322	3-5	76-127
ATR64V	19	5.8	0.250	6.4	92	42	14.1	10.4	8.5	6.4	6	152	4	102	10.24	260	9.5 (9-10)	241 (229-254)	3/4-18	19-457	12.68	322	3-5	76-127
ATR74B	20	6.1	0.156	4.0	70	32	13.2	9.7	8.0	6.0	7	178	4 1/2	114	11.28	287	10.5 (10-11)	267 (254-279)	1-36	25-914	14.15	359	4-6 1/2	102-165
ATR74N	20	6.1	0.188	4.8	82	37	16.1	11.9	9.8	7.4	7	178	4 1/2	114	11.28	287	10.5 (10-11)	267 (254-279)	1-36	25-914	14.15	359	4-6 1/2	102-165
ATR74V	20	6.1	0.250	6.4	105	48	21.4	16	13.2	10.0	7	178	4 1/2	114	11.28	287	10.5 (10-11)	267 (254-279)	1-36	25-914	14.15	359	4-6 1/2	102-165
ATR74B	21	6.4	0.156	4.0	74	34	11.7	8.5	7.0	5.2	7	178	4 1/2	114	11.28	287	10.5 (10-11)	267 (254-279)	1-36	25-914	14.15	359	4-6 1/2	102-165
ATR74N	21	6.4	0.188	4.8	86	39	14.3	10.5	8.7	6.5	7	178	4 1/2	114	11.28	287	10.5 (10-11)	267 (254-279)	1-36	25-914	14.15	359	4-6 1/2	102-165
ATR74V	21	6.4	0.250	6.4	110	50	19.1	14.2	11.8	8.9	7	178	4 1/2	114	11.28	287	10.5 (10-11)	267 (254-279)	1-36	25-914	14.15	359	4-6 1/2	102-165
ATR74B	22	6.7	0.156	4.0	77	35	10.3	7.5	6.1	4.5	7	178	4 1/2	114	11.28	287	10.5 (10-11)	267 (254-279)	1-36	25-914	14.15	359	4-6 1/2	102-165
ATR74N	22	6.7	0.188	4.8	89	40	12.7	9.3	7.6	5.7	7	178	4 1/2	114	11.28	287	10.5 (10-11)	267 (254-279)	1-36	25-914	14.15	359	4-6 1/2	102-165
ATR74V	22	6.7	0.250	6.4	115	52	17.2	12.7	10.5	7.9	7	178	4 1/2	114	11.28	287	10.5 (10-11)	267 (254-279)	1-36	25-914	14.15	359	4-6 1/2	102-165

* Range of bolt circle

Note: Schröder reserves the right to substitute materials or change the manufacturing process of its products without prior notification.

ATR64 / ATR74 / ATR85 / ATR106 (CONTINUED)

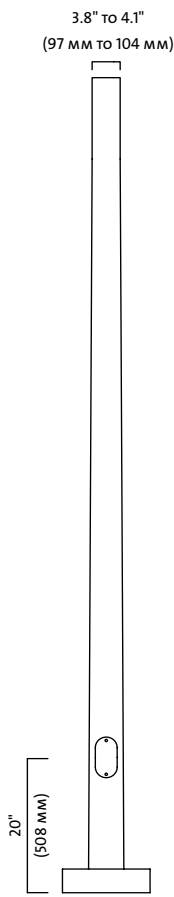
ALUMINUM TAPERED POLE ROUND

CATALOG NUMBER	POLE HEIGHT		WALL THICKNESS		WEIGHT		EPA RATING	EPA RATING	EPA RATING	EPA RATING	POLE BASE SIZE		POLE TOP SIZE		(A) PLATE SIZE		(B) BOLT CIRCLE		ANCHOR BOLTS		(C)		(D) OPENING	
	ft	m	in	mm	lbs	kg	sq.ft	sq.ft	sq.ft	sq.ft	in	mm	in	mm	in	mm	in*	mm*	in	mm	in	mm	in	mm
ATR74B	23	7.0	0.156	4.0	80	36	9.1	6.5	5.3	3.9	7	178	4 1/2	114	11.28	287	10.5 (10-11)	267 (254-279)	1-36	25-914	14.15	359	4-6 1/2	102-165
ATR74N	23	7.0	0.188	4.8	93	42	11.3	8.2	6.7	5.0	7	178	4 1/2	114	11.28	287	10.5 (10-11)	267 (254-279)	1-36	25-914	14.15	359	4-6 1/2	102-165
ATR74V	23	7.0	0.250	6.4	119	54	15.4	11.3	9.4	7.0	7	178	4 1/2	114	11.28	287	10.5 (10-11)	267 (254-279)	1-36	25-914	14.15	359	4-6 1/2	102-165
ATR74B	24	7.3	0.156	4.0	83	38	8.0	5.7	4.6	3.4	7	178	4 1/2	114	11.28	287	10.5 (10-11)	267 (254-279)	1-36	25-914	14.15	359	4-6 1/2	102-165
ATR74N	24	7.3	0.188	4.8	97	44	10.1	7.3	5.9	4.4	7	178	4 1/2	114	11.28	287	10.5 (10-11)	267 (254-279)	1-36	25-914	14.15	359	4-6 1/2	102-165
ATR74V	24	7.3	0.250	6.4	124	56	13.8	10.1	8.3	6.2	7	178	4 1/2	114	11.28	287	10.5 (10-11)	267 (254-279)	1-36	25-914	14.15	359	4-6 1/2	102-165
ATR74B	25	7.6	0.156	4.0	86	39	7.1	5.0	4.0	2.9	7	178	4 1/2	114	11.28	287	10.5 (10-11)	267 (254-279)	1-36	25-914	14.15	359	4-6 1/2	102-165
ATR74N	25	7.6	0.188	4.8	100	45	9.0	6.4	5.2	3.8	7	178	4 1/2	114	11.28	287	10.5 (10-11)	267 (254-279)	1-36	25-914	14.15	359	4-6 1/2	102-165
ATR74V	25	7.6	0.250	6.4	129	59	12.4	9.1	7.4	5.5	7	178	4 1/2	114	11.28	287	10.5 (10-11)	267 (254-279)	1-36	25-914	14.15	359	4-6 1/2	102-165
ATR85B	25	7.6	0.156	4.0	100	45	11.9	8.9	7.3	5.4	8	203	4 1/2	114	12	305	11.5 (11-12)	292 (279-305)	1-36	25-914	15.15	385	4-6 1/2	102-165
ATR85N	25	7.6	0.188	4.8	117	53	14.8	11.1	9.1	6.8	8	203	4 1/2	114	12	305	11.5 (11-12)	292 (279-305)	1-36	25-914	15.15	385	4-6 1/2	102-165
ATR85V	25	7.6	0.250	6.4	152	69	20.1	15.2	12.5	9.4	8	203	4 1/2	114	12	305	11.5 (11-12)	292 (279-305)	1-36	25-914	15.15	385	4-6 1/2	102-165
ATR85B	26	7.9	0.156	4.0	104	47	10.7	7.9	6.5	4.8	8	203	4 1/2	114	12	305	11.5 (11-12)	292 (279-305)	1-36	25-914	15.15	385	4-6 1/2	102-165
ATR85N	26	7.9	0.188	4.8	122	55	13.3	10.0	8.2	6.1	8	203	4 1/2	114	12	305	11.5 (11-12)	292 (279-305)	1-36	25-914	15.15	385	4-6 1/2	102-165
ATR85V	26	7.9	0.250	6.4	157	71	18.3	13.1	11.4	8.5	8	203	4 1/2	114	12	305	11.5 (11-12)	292 (279-305)	1-36	25-914	15.15	385	4-6 1/2	102-165
ATR85B	27	8.2	0.156	4.0	107	49	9.6	7.1	5.8	4.2	8	203	4 1/2	114	12	305	11.5 (11-12)	292 (279-305)	1-36	25-914	15.15	385	4-6 1/2	102-165
ATR85N	27	8.2	0.188	4.8	126	57	12.0	9.0	7.4	5.4	8	203	4 1/2	114	12	305	11.5 (11-12)	292 (279-305)	1-36	25-914	15.15	385	4-6 1/2	102-165
ATR85V	27	8.2	0.250	6.4	153	70	16.6	12.5	10.3	7.7	8	203	4 1/2	114	12	305	11.5 (11-12)	292 (279-305)	1-36	25-914	15.15	385	4-6 1/2	102-165
ATR85B	28	8.5	0.156	4.0	111	50	8.6	6.3	5.1	3.7	8	203	4 1/2	114	12	305	11.5 (11-12)	292 (279-305)	1-36	25-914	15.15	385	4-6 1/2	102-165
ATR85N	28	8.5	0.188	4.8	130	59	10.9	8.1	6.6	4.9	8	203	4 1/2	114	12	305	11.5 (11-12)	292 (279-305)	1-36	25-914	15.15	385	4-6 1/2	102-165
ATR85V	28	8.5	0.250	6.4	168	76	15.1	11.3	9.3	7.0	8	203	4 1/2	114	12	305	11.5 (11-12)	292 (279-305)	1-36	25-914	15.15	385	4-6 1/2	102-165
ATR85B	29	8.8	0.156	4.0	114	52	7.0	5.1	4.1	3.0	8	203	4 1/2	114	12	305	11.5 (11-12)	292 (279-305)	1-36	25-914	15.15	385	4-6 1/2	102-165
ATR85N	29	8.8	0.188	4.8	134	61	8.9	6.6	5.4	3.9	8	203	4 1/2	114	12	305	11.5 (11-12)	292 (279-305)	1-36	25-914	15.15	385	4-6 1/2	102-165
ATR85V	29	8.8	0.250	3.4	174	79	12.5	9.4	7.7	5.7	8	203	4 1/2	114	12	305	11.5 (11-12)	292 (279-305)	1-36	25-914	15.15	385	4-6 1/2	102-165
ATR85N	30	9.1	0.188	4.8	139	63	7.9	5.8	4.7	3.4	8	203	4 1/2	114	12	305	11.5 (11-12)	292 (279-305)	1-36	25-914	15.15	385	4-6 1/2	102-165
ATR85V	30	9.1	0.250	6.4	170	77	11.3	8.4	6.8	5.1	8	203	4 1/2	114	12	305	11.5 (11-12)	292 (279-305)	1-36	25-914	15.15	385	4-6 1/2	102-165
ATR85N	31	9.4	0.188	4.8	143	65	7.0	5.0	4.0	2.9	8	203	4 1/2	114	12	305	11.5 (11-12)	292 (279-305)	1-36	25-914	15.15	385	4-6 1/2	102-165
ATR85V	31	9.4	0.250	6.4	185	84	10.2	7.5	6.1	4.5	8	203	4 1/2	114	12	305	11.5 (11-12)	292 (279-305)	1-36	25-914	15.15	385	4-6 1/2	102-165
ATR85N	32	9.8	0.188	4.8	147	67	6.1	4.4	3.5	2.4	8	203	4 1/2	114	12	305	11.5 (11-12)	292 (279-305)	1-36	25-914	15.15	385	4-6 1/2	102-165
ATR85V	32	9.8	0.250	6.4	191	87	9.2	6.7	5.4	3.9	8	203	4 1/2	114	12	305	11.5 (11-12)	292 (279-305)	1-36	25-914	15.15	385	4-6 1/2	102-165
ATR85N	33	10.1	0.188	4.8	152	69	5.4	3.7	2.9	2.0	8	203	4 1/2	114	12	305	11.5 (11-12)	292 (279-305)	1-36	25-914	15.15	385	4-6 1/2	102-165
ATR85V	33	10.1	0.250	6.4	197	90	8.2	5.9	4.8	3.4	8	203	4 1/2	114	12	305	11.5 (11-12)	292 (279-305)	1-36	25-914	15.15	385	4-6 1/2	102-165
ATR85N	34	10.4	0.188	4.8	156	71	4.6	3.2	2.5	1.6	8	203	4 1/2	114	12	305	11.5 (11-12)	292 (279-305)	1-36	25-914	15.15	385	4-6 1/2	102-165
ATR85V	34	10.4	0.250	6.4	202	92	7.3	5.2	4.2	3.0	8	203	4 1/2	114	12	305	11.5 (11-12)	292 (279-305)	1-36	25-914	15.15	385	4-6 1/2	102-165
ATR106N	35	10.7	0.188	4.8	201	91	12.5	9.2	7.5	5.4	10	254	6	152	12.94	329	14.5 (13-15)	368 (156-381)	1 1/4-40	32-1016	17.16	436	4-6 1/2	102-165
ATR106V	35	10.7	0.250	6.4	261	119	17.6	13.2	10.8	8.0	10	254	6	152	12.94	329	14.5 (13-15)	368 (156-381)	1 1/4-40	32-1016	17.16	436	4-6 1/2	102-165
ATR106N	36	11.0	0.188	4.8	206	94	11.4	8.4	6.8	4.9	10	254	6	152	12.94	329	14.5 (13-15)	368 (156-381)	1 1/4-40	32-1016	17.16	436	4-6 1/2	102-165
ATR106V	36	11.0	0.250	6.4	267	121	16.3	12.1	9.9	7.3	10	254	6	152	12.94	329	14.5 (13-15)	368 (156-381)	1 1/4-40	32-1016	17.16	436	4-6 1/2	102-165
ATR106N	37	11.3	0.188	4.8	211	96	10.4	7.7	6.2	4.4	10	254	6	152	12.94	329	14.5 (13-15)	368 (156-381)	1 1/4-40	32-1016	17.16	436	4-6 1/2	102-165
ATR106V	37	11.3	0.250	6.4	274	125	15.0	11.2	9.1	6.6	10	254	6	152	12.94	329	14.5 (13-15)	368 (156-381)	1 1/4-40	32-1016	17.16	436	4-6 1/2	102-165
ATR106N	38	11.6	0.188	4.8	216	98	9.5	6.9	5.6	3.9	10	254	6	152	12.94	329	14.5 (13-15)	368 (156-381)	1 1/4-40	32-1016	17.16	436	4-6 1/2	102-165
ATR106V	38	11.6	0.250	6.4	281	128	13.9	10.3	8.4	6.0	10	254	6	152	12.94	329	14.5 (13-15)	368 (156-381)	1 1/4-40	32-1016	17.16	436	4-6 1/2	102-165
ATR106N	39	11.9	0.188	4.8	222	101	8.7	6.3	5.0	3.5	10	254	6	152	12.94	329	14.5 (13-15)	368 (156-381)	1 1/4-40	32-1016	17.16	436	4-6 1/2	102-165
ATR106V	39	11.9	0.250	6.4	288	131	12.8	9.4	7.7	5.5	10	254	6	152	12.94	329	14.5 (13-15)	368 (156-381)	1 1/4-40	32-1016	17.16	436	4-6 1/2	102-165
ATR106N	40	12.2	0.188	4.8	224	102	7.9	5.7	4.5	3.1	10	254	6	152	12.94	329	14.5 (13-15)	368 (156-381)	1 1/4-40	32-1016	17.16	436	4-6 1/2	102-165
ATR106V	40	12.2	0.250	6.4	296	135	11.8	8.7	7.0	5.0	10	254	6	152	12.94	329	14.5 (13-15)	368 (156-381)	1 1/4-40	32-1016	17.16	436	4-6 1/2	102-165

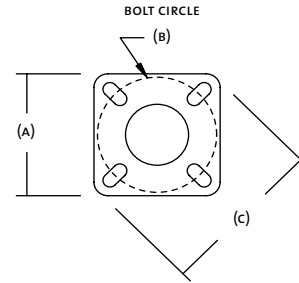
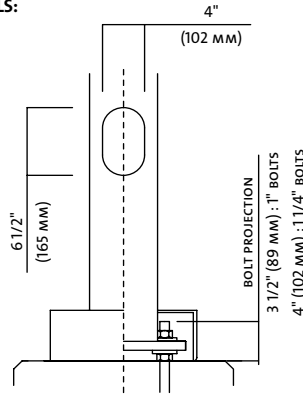
* Range of bolt circle

Note: Schröder reserves the right to substitute materials or change the manufacturing process of its products without prior notification.

STR ROUND STEEL TAPERED POLE



BASE DETAILS:



COMES WITH 4 ANCHOR BOLTS, 8 NUTS AND WASHERS
VARIOUS DECORATIVE BASE COVERS AVAILABLE.

Specifications:

Pole: Made from a mandrel-formed steel tapered round shaft, 0.14 inch/feet welded to both the top and bottom of a steel base. A 4" x 6 1/2" (102 mm x 165 mm) maintenance opening, complete with cover and ground lug, is centered 20" (508 mm) from the bottom of the anchor plate.

Base cover: Two pieces square base cover made from formed steel mechanically fastened with stainless steel screws.

Finish: "Hot Dip" chemical etching preparation. Polyester powder coat textured finish. Available in a range of many RAL colors. Durable UV-resistant exterior finish as per # ASTM G7 and outstanding salt-spray resistance according to # ASTM B117 testing procedures.

Options:

- PH7:** Button-type photoelectric cell (specify operating voltage)
- PH8:** Quarter-turn type photoelectric cell (specify operating voltage)
- PH9:** Shorting cap for single phase only
- DR:** Duplex receptacle (120V line volt only)
- GFI:** DR with common ground fault interrupter (120V line voltage only)
- BA:** Banner arm option
- BAS24:** Single banner arm
- BASD24:** Single banner arm with upper and lower arm
- BAD24:** Double banner arm
- BADD24:** Double banner arm with upper and lower arm
- PSS16:** Single plant support
- PSD16:** Double plant support

Note: EPA recommendations are calculated according to AASHTO standards and include a 30% gust factor, with a 50 lbs (23 kg) load applied at 1 ft. (305 mm) above the top of the pole. The maximum EPA rating shown is 30.0 sq. ft. Some poles may exceed this rating.

CATALOG NUMBER	POLE HEIGHT		WALL THICKNESS		WEIGHT		EPA RATING	EPA RATING	EPA RATING	EPA RATING	POLE BASE SIZE		POLE TOP SIZE		(A) PLATE SIZE	(B) BOLT CIRCLE		ANCHOR BOLTS		(C)		
	ft	m	in	mm	lbs	kg	70 mph	80 mph	87.5 mph	100 mph	in	mm	in	mm	in	mm	in*	mm*	in	mm	in	mm
STRD	18	5.49	0.120	3.0	158	72	25.7	19.9	16.7	12.8	6.3	160	3.8	97	12	305	12 (11.5-12.5)	305 (292-318)	1-36	25-914	15.3	387
STRU	18	5.49	0.180	4.6	212	96	30.0	30.0	25.9	20.0	6.3	160	3.8	97	12	305	12 (11.5-12.5)	305 (292-318)	1-36	25-914	15.3	387
STRD	19	5.79	0.120	3.0	165	75	25.2	19.5	16.3	12.5	6.4	163	3.8	97	12	305	12 (11.5-12.5)	305 (292-318)	1-36	25-914	15.3	387
STRU	19	5.79	0.180	4.6	219	100	30.0	30.0	25.4	19.7	6.4	163	3.8	97	12	305	12 (11.5-12.5)	305 (292-318)	1-36	25-914	15.3	387
STRD	20	6.10	0.120	3.0	173	79	24.7	19.1	16.0	12.3	6.6	168	3.8	97	12	305	12 (11.5-12.5)	305 (292-318)	1-36	25-914	15.3	387
STRU	20	6.10	0.180	4.6	229	104	30.0	29.7	25.0	19.1	6.6	168	3.8	97	12	305	12 (11.5-12.5)	305 (292-318)	1-36	25-914	15.3	387
STRD	21	6.40	0.120	3.0	188	85	24.3	18.7	15.7	12.1	6.7	170	3.8	97	12	305	12 (11.5-12.5)	305 (292-318)	1-36	25-914	15.3	387
STRU	21	6.40	0.180	4.6	242	110	30.0	29.3	24.3	18.5	6.7	170	3.8	97	12	305	12 (11.5-12.5)	305 (292-318)	1-36	25-914	15.3	387
STRD	22	6.71	0.120	3.0	196	89	23.7	18.4	15.4	11.7	6.9	175	3.8	97	12	305	12 (11.5-12.5)	305 (292-318)	1-36	25-914	15.3	387
STRU	22	6.71	0.180	4.6	254	115	30.0	28.3	23.5	17.9	6.9	175	3.8	97	12	305	12 (11.5-12.5)	305 (292-318)	1-36	25-914	15.3	387
STRD	23	7.01	0.120	3.0	206	94	23.5	18.0	15.0	11.3	7.0	178	3.8	97	12	305	12 (11.5-12.5)	305 (292-318)	1-36	25-914	15.3	387

* Range of bolt circle

Note: Schröder reserves the right to substitute materials or change the manufacturing process of its products without prior notification.

CATALOG NUMBER	POLE HEIGHT		WALL THICKNESS		WEIGHT		EPA RATING 70 mph	EPA RATING 80 mph	EPA RATING 87.5 mph	EPA RATING 100 mph	POLE BASE SIZE		POLE TOP SIZE		(A) PLATE SIZE	(B) BOLT CIRCLE		ANCHOR BOLTS		(C)		
	ft	m	in	mm	lbs	kg	sq.ft	sq.ft	sq.ft	sq.ft	in	mm	in	mm	in	mm	in*	mm*	in	mm	in	mm
STRJ	23	7.01	0.180	4.6	268	122	30.0	27.5	22.8	17.3	7.0	178	3.8	97	12	305	12 (11.5-12.5)	305 (292-318)	1-36	25-914	15.3	387
STRD	24	7.32	0.120	3.0	214	97	23.1	17.2	14.5	10.9	7.2	183	3.8	97	12	305	12 (11.5-12.5)	305 (292-318)	1-36	25-914	15.3	387
STRJ	24	7.32	0.180	4.6	280	127	30.0	26.8	22.2	16.9	7.2	183	3.8	97	12	305	12 (11.5-12.5)	305 (292-318)	1-36	25-914	15.3	387
STRD	25	7.62	0.120	3.0	221	100	22.8	17.0	14.1	10.6	7.3	185	3.8	97	12	305	12 (11.5-12.5)	305 (292-318)	1-36	25-914	15.3	387
STRJ	25	7.62	0.180	4.6	296	135	30.0	26.1	21.7	16.4	7.3	185	3.8	97	12	305	12 (11.5-12.5)	305 (292-318)	1-36	25-914	15.3	387
STRD	26	7.93	0.120	3.0	235	107	22.2	16.6	13.7	10.3	7.4	188	3.8	97	12	305	12 (11.5-12.5)	305 (292-318)	1-36	25-914	15.3	387
STRJ	26	7.93	0.180	4.6	318	145	30.0	25.5	21.2	16.1	7.4	188	3.8	97	12	305	12 (11.5-12.5)	305 (292-318)	1-36	25-914	15.3	387
STRD	27	8.23	0.120	3.0	241	110	21.7	16.2	13.4	10.1	7.6	193	3.8	97	12	305	12 (11.5-12.5)	305 (292-318)	1-36	25-914	15.3	387
STRJ	27	8.23	0.180	4.6	326	148	30.0	25.0	20.8	15.7	7.6	193	3.8	97	12	305	12 (11.5-12.5)	305 (292-318)	1-36	25-914	15.3	387
STRD	28	8.53	0.120	3.0	248	113	21.2	15.8	13.1	9.8	7.7	196	3.8	97	12	305	12 (11.5-12.5)	305 (292-318)	1-36	25-914	15.3	387
STRJ	28	8.53	0.180	4.6	334	152	30.0	24.5	20.4	15.4	7.7	196	3.8	97	12	305	12 (11.5-12.5)	305 (292-318)	1-36	25-914	15.3	387
STRD	29	8.84	0.120	3.0	254	115	18.8	14.1	11.6	8.7	7.8	198	3.8	97	12	305	12 (11.5-12.5)	305 (292-318)	1-36	25-914	15.3	387
STRJ	29	8.84	0.180	4.6	342	155	29.0	21.9	18.2	13.8	7.8	198	3.8	97	12	305	12 (11.5-12.5)	305 (292-318)	1-36	25-914	15.3	387
STRD	30	9.14	0.120	3.0	260	118	20.9	15.7	13.0	9.7	8.0	203	3.8	97	12	305	12 (11.5-12.5)	305 (292-318)	1-36	25-914	15.3	387
STRJ	30	9.14	0.180	4.6	350	159	30.0	24.4	20.2	15.3	8.0	203	3.8	97	12	305	12 (11.5-12.5)	305 (292-318)	1-36	25-914	15.3	387
STRD	31	9.45	0.120	3.0	344	156	20.5	15.3	12.6	9.4	8.4	213	4.1	104	15	381	15 (11.375-15)	381 (289-318)	1-36	25-914	19.5	495
STRJ	31	9.45	0.180	4.6	470	214	30.0	23.9	19.7	14.9	8.4	213	4.1	104	15	381	15 (11.375-15)	381 (289-318)	1-36	25-914	19.5	495
STRD	32	9.75	0.120	3.0	354	161	20.1	14.9	12.2	9.2	8.6	218	4.1	104	15	381	15 (11.375-15)	381 (289-318)	1-36	25-914	19.5	495
STRJ	32	9.75	0.180	4.6	480	218	30.0	23.4	19.3	14.6	8.6	218	4.1	104	15	381	15 (11.375-15)	381 (289-318)	1-36	25-914	19.5	495
STRD	33	10.06	0.120	3.0	362	165	19.7	14.6	11.9	8.9	8.7	221	4.1	104	15	381	15 (11.375-15)	381 (289-318)	1-36	25-914	19.5	495
STRJ	33	10.06	0.180	4.6	490	223	30.0	23.0	19.0	14.3	8.7	221	4.1	104	15	381	15 (11.375-15)	381 (289-318)	1-36	25-914	19.5	495
STRD	34	10.36	0.120	3.0	371	169	19.3	14.2	11.7	8.7	8.8	224	4.1	104	15	381	15 (11.375-15)	381 (289-318)	1-36	25-914	19.5	495
STRJ	34	10.36	0.180	4.6	499	227	30.0	22.5	18.6	14.0	8.8	224	4.1	104	15	381	15 (11.375-15)	381 (289-318)	1-36	25-914	19.5	495
STRD	35	10.67	0.120	3.0	382	174	18.9	13.9	11.4	8.5	9.0	229	4.1	104	15	381	15 (11.375-15)	381 (289-318)	1-36	25-914	19.5	495
STRJ	35	10.67	0.180	4.6	508	231	29.7	22.2	18.3	13.8	9.0	229	4.1	104	15	381	15 (11.375-15)	381 (289-318)	1-36	25-914	19.5	495
STRD	36	10.97	0.120	3.0	376	171	17.1	12.5	10.2	7.6	8.9	226	3.9	99	15	381	15 (11.375-15)	381 (289-318)	11/4-48	32-1219	19.5	495
STRJ	36	10.97	0.180	4.6	558	254	27.2	19.9	16.6	12.5	8.9	226	3.9	99	15	381	15 (11.375-15)	381 (289-318)	11/4-48	32-1219	19.5	495
STRD	37	11.28	0.120	3.0	394	179	16.8	12.2	10.0	7.4	9.1	231	3.9	99	15	381	15 (11.375-15)	381 (289-318)	11/4-48	32-1219	19.5	495
STRJ	37	11.28	0.180	4.6	564	256	26.8	19.9	16.4	12.3	9.1	231	3.9	99	15	381	15 (11.375-15)	381 (289-318)	11/4-48	32-1219	19.5	495
STRD	38	11.58	0.120	3.0	419	190	16.6	12.1	9.9	7.3	9.2	234	3.9	99	15	381	15 (11.375-15)	381 (289-318)	11/4-48	32-1219	19.5	495
STRJ	38	11.58	0.180	4.6	572	260	26.5	19.7	16.2	12.1	9.2	234	3.9	99	15	381	15 (11.375-15)	381 (289-318)	11/4-48	32-1219	19.5	495
STRD	39	11.89	0.120	3.0	429	195	16.5	11.9	9.7	7.1	9.3	236	3.9	99	15	381	15 (11.375-15)	381 (289-318)	11/4-48	32-1219	19.5	495
STRJ	39	11.89	0.180	4.6	580	264	26.2	19.4	16.0	12.0	9.3	236	3.9	99	15	381	15 (11.375-15)	381 (289-318)	11/4-48	32-1219	19.5	495
STRD	40	12.19	0.120	3.0	438	199	16.0	11.7	9.5	7.0	9.5	241	3.9	99	15	381	15 (11.375-15)	381 (289-318)	11/4-48	32-1219	19.5	495
STRJ	40	12.19	0.180	4.6	588	267	26.0	19.3	15.9	11.9	9.5	241	3.9	99	15	381	15 (11.375-15)	381 (289-318)	11/4-48	32-1219	19.5	495

* Range of bolt circle

Note: Schröder reserves the right to substitute materials or change the manufacturing process of its products without prior notification.